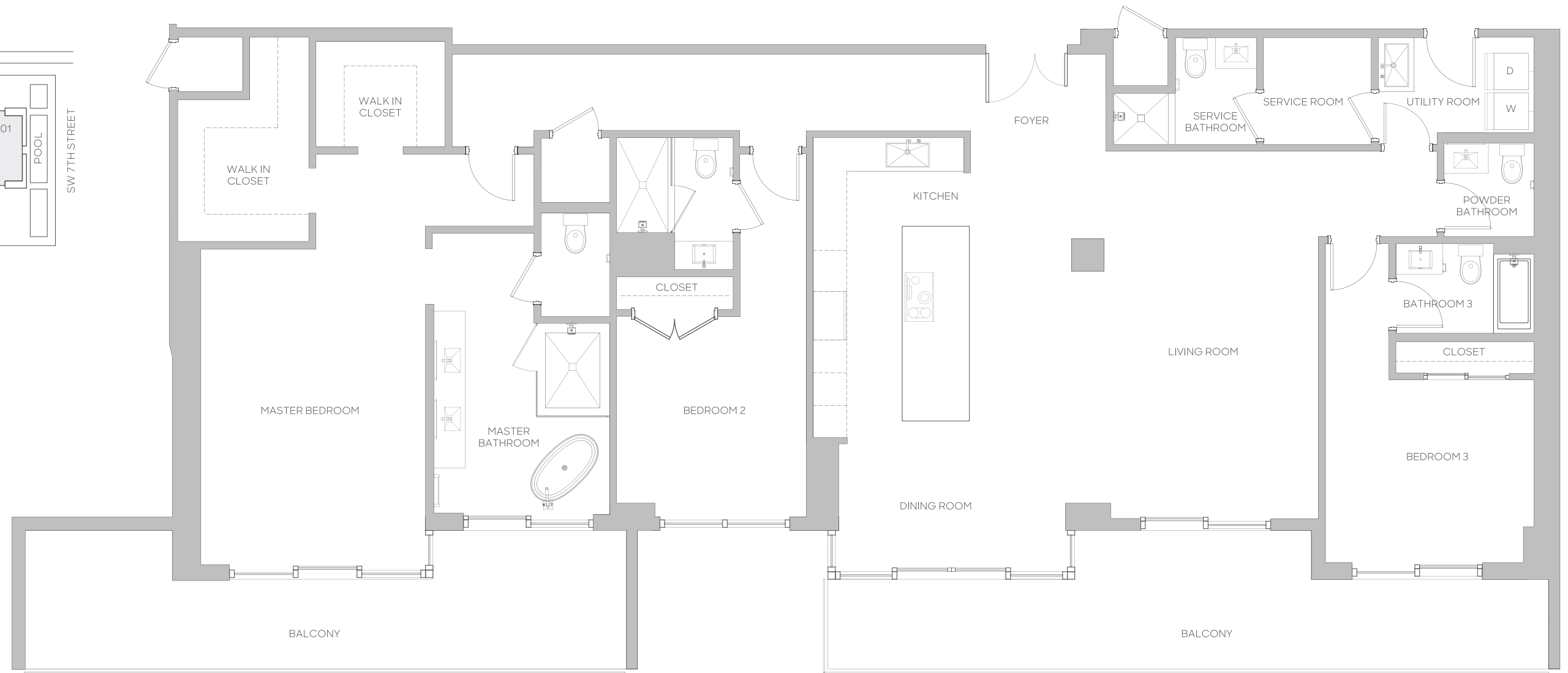
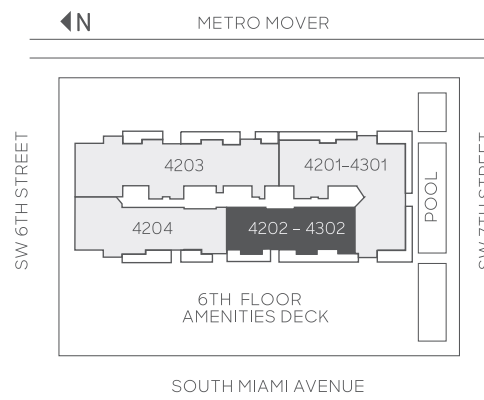




4202 4302 PENTHOUSE

3 BEDROOMS | 4.5 BATHROOMS | DINING | UTILITY
FLOORS: 42-43

RESIDENCE	2,684 sq. ft.	249 sq. mt.
BALCONY	553 sq. ft.	51 sq. mt.
TOTAL	3,237 sq. ft.	300 sq. mt.



FORTUNE
INTERNATIONAL
GROUP



Stated dimensions set forth above are measured to the exterior boundaries of the exterior walls and the centerline of interior demising walls, including structural walls and other interior structural components of the building, and in fact vary from the dimensions that would be determined by using the description and definition of the "Unit" set forth in the Declaration (which generally only includes the interior airspace between the perimeter walls and excludes interior structural components). Measurements of rooms set forth on this floor plan are generally taken at the greatest points of each given room (as if the room were a perfect rectangle), without regard for any cutouts. Accordingly, the area of the actual room will typically be smaller than the product obtained by multiplying the stated length times width. All dimensions are approximate and may vary with actual construction. The size and configuration of balconies and terraces varies throughout the building. The balcony depicted above is among the larger balconies and is not reflective of the actual size or configuration of the balcony for each unit of this unit type. Refer to Exhibit "2" and Exhibit "3" to the Declaration of Condominium for additional information regarding the size and configuration of each Unit, and any balcony appurtenant thereto. Terraces/balconies are not part of the Unit.

This is not intended to be an offer to sell, or solicitation to buy, condominium units to residents of any jurisdiction where prohibited by law. This offering is made only by the documents furnished to a buyer by Brickell RE Associates, LLC and/or Brickell RI Associates, LLC as applicable (each a "Seller") in accordance with 718.503(2) and 718.706, F.S. and each Buyer, by execution of an agreement for the purchase of a Unit (an "Agreement"), shall be deemed to have acknowledged and agreed that (i) Seller did not construct or create the Condominium or convert the improvements to condominium ownership, nor did Seller assume any of the obligations of the developer of the Condominium (the "Developer") or any other obligations of a "developer" under Florida law, and (ii) Seller has not and does not make any representations or warranties whatsoever with respect to the matters set forth or contained in the Prospectus or any other materials prepared by or on behalf of the Developer, and to the maximum extent permitted under applicable law. Seller disclaims any and all representations, warranties and liability with respect to such materials and the condition of the Units and other improvements in the Condominium, including (without limitation) all matters pertaining to the construction of such Units and other improvements. All descriptions, depictions, and other information contained and/or described in this fact sheet are conceptual in nature, and subject to change, and shall not be binding unless included in an Agreement signed between the buyer and Seller. They should not be relied upon as representations, express or implied, of the final detail of the residences or the Condominium. The Units are owned and offered for sale by Brickell RE Associates, LLC and/or Brickell RI Associates, LLC, which is not affiliated with Swire Properties. The name Reach/Rise is used under license.